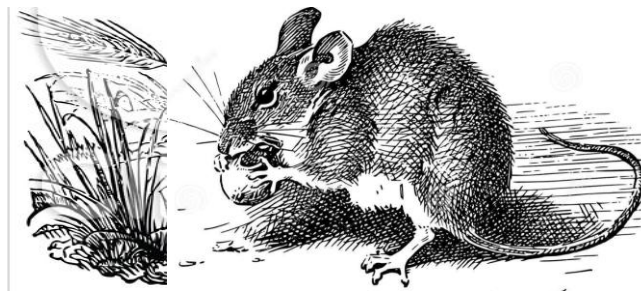


KILNINFORD NEWS

Kilninford News: **Issue 52**

September, 2015



***Peace and Tranquillity
this Autumn***

The information, opinions and views presented in the 'Kilninford News' reflect the views of the authors and contributors of the articles and are not necessarily those of the Kilninford News (KN) team. Publication of articles, advertisements or product information does not constitute endorsement or approval by the Kilninford News (KN) team. They cannot be held responsible for any errors or for any consequences arising from the use of the information contained in the newsletter.

The Kilninford News is governed by the Constitution of the 'Kilninford Association 2015'.



Kilninford News

Kilninford Association 2015

EGM to be held on

Wednesday 4th November 2015

At

7:30PM

Cuilfail Hotel - Kilmelford

All are welcome

KILNINFORD NEWS - Update from the team

Well we hope that you enjoyed your summer? - despite the rain! Let us hope that the autumn will be kinder to us.

The fledgling new team managed to get the Easter edition (Issue 51) out on time, phew! We hope that the transition from the previous custodians was ok? Apologies for any *faux pas* or any omissions - a few teething problems were inevitable. In respect of this edition - we must apologise for the delay in production and distribution. Unfortunately, this was outside the control of the Kilninford News Team. Sorry for any inconvenience!

Would anyone wishing to make a contribution to the next (Christmas edition) please let us have text and adverts by the end of the first week in November (i.e. **Saturday 7th November**). It takes us approximately 2 weeks to edit and print the newsletter, and a further few days to have it distributed. Thus, in order to ensure that it is available within the community in good time, and to give ample time to advertise pre-Christmas events please make a note in your diary. The planned dates for future editions of the Kilninford news are given below:

Issue #	Edition	All contributions to editorial team due:	Estimated distribution date (week commencing)
53	Christmas 2015	07 November 2015	30 November 2015
54	Easter 2016	02 March 2016	21 March 2016
55	Summer 2016	09 July 2016	01 August 2016

What you may not know in respect of the Kilninford News is that the new team had to provide a new Constitution to the financial institutions in April 2015. Within this Constitution, known as the "Constitution for the Kilninford Association 2015" (if anyone wishes a copy please contact me), there is a requirement for an Annual General Meeting. As a first step in the formal process an Extraordinary General Meeting (EGM) has been arranged for **Wednesday 4th November at the Cuilfail Hotel, Kilmelford - starting time 19:30**. We hope that a number of our readers will be able to attend, as well as our regular contributors and advertisers. It is your chance to have a say on what you would like to see provided within the Newsletter - **Please don't miss your opportunity for an input!**

Wishing you all the very best for the upcoming months - Enjoy!

Graham (Ed.)

WHAT'S ON IN AND AROUND KILMELFORD AND KILNINVER

Forthcoming events

Friday 6th Sept: Just for Fun Party

Children all welcome at the Village Hall 5.30pm Friday 6th Sept for tea & games prior to the Badminton starting at 7pm.

Sunday 20th Sept: Moderator's Visit

The Rt Rev. Angus Morrison – Moderator of the General Assembly of Church of Scotland will be coming to Argyll & staying locally the night of Saturday 19th September. He will be at Kilninver about 10am on the Sunday morning (20th). The Moderator spent his youth in Oban & used to enjoy helping at the netting on Loch Feochan.

Anyone who would like to meet him would be welcome to come, have a cup of coffee/tea at Kilninver Church.

The session agreed to the suggestion of putting on a simple flower festival in the church, with the theme of fishing. Anyone willing to help decorate or contribute in any way please contact Mary Sandilands 01852 300313.

Afterwards the Moderator will be at the United Service at Craignish at 12 noon followed by lunch at Ardfern Village Hall. He will also visit the new affordable house at Craignish.

Sunday 27th September

Community Celebration 27/9 – 5pm at Kilninver Church *

NOTE. there is a fuller report/poster to advertise the event to come– please check local information sites

Wednesday 7th October

Parish Lunch.

Wednesday 4th November

Kilninford Association 2015 - EGM, and discussions on the way forward with the Kilninford News. [See separate item]. To be held at the Cuilfail Hotel, Kilmelford. Starting time 19:30. All welcome.

Saturday 14th & Sunday 15th November 2015

Jan Brown has organised a 'Fair Trade and Christmas Market' at Kilmartin Museum on November 14th and 15th – 11am – 4pm each day. All welcome.

Contact - Janvbrown@btinternet.com

ART GROUP

The group meets **weekly on Thursdays** from 2 p.m. – 4.30 p.m. in the small hall in Kilmelford. All welcome. £2 per session.

Contact: Agnes McColl Tel: 01852 200365

COUNTRY DANCING

Thursday evenings from 8 p.m. – 10 p.m.

All welcome. You can come and join us at any time.

Contact: Bob Fleck Tel: 01852 200258 E-mail: rfleck@btinternet.com

'CRAFTS and THINGS'

For anyone interested in embroidery, tapestry, sewing, knitting, crochet and other similar crafts, meetings are in the Kilmelford Village Hall every **Wednesday morning from 10 a.m. - 12noon**. £2.00 per person for each session.

Contact: Toni Mitchell Tel: 01852 316151 Olga Salmond Tel: 01852 200787

MELFORT UKULELES

Wednesday evenings: Melfort Ukuleles - 7.30-9.30pm Kilmelford Village Hall. All welcome, from beginners to experienced musicians. Spare ukuleles available to try. £4 per person £6 per couple, children under 18 free when accompanied by an adult. Fee includes tuition, music, tea/coffee biscuits. Contact: Sarah Whittle Tel: 01852 500790

MOTHERS AND TODDLERS PLAYGROUP

Playgroup is on every Wednesday 2 - 3.30pm (apart from school holidays) in Kilmelford hall. We are now a very small group of mums and babes and would gladly welcome new people to join us for a lovely afternoon of fun, craft and play. Thank you all for your continuing support and help. Best wishes to all , and roll on the sunshine!

For more information contact please contact Georgina Dalton on 01866 844212 or email afrobb@hotmail.co.uk

GAMES NIGHTS

The Friday evening games of Kilmelopoly & Beetle Drives have been enjoyed by various children and now with the help of Brian & Helen Laws, weekly Badminton sessions are planned. All children aged 8 years upwards welcome £2 per head. 7pm – 8.30 pm. Juice & snack included. The table games will continue on some nights as well.

Contacts: Lucy 200722, Michelle 316105, Helen 200789, Georgina 01866 844212
All welcome to any of these events.

MUSIC NIGHTS

All welcome. Come and join in and musicians, bring along your instruments.

Loch Melfort Hotel (Tel: 01852 200233)

Every 1st and 3rd Friday of the month – from approximately 9.30 p.m.

KILMARTIN HOUSE MUSEUM

A full programme of events can be found on www.kilmartin.org

Information and bookings: Tel: 01546 510278 E-mail: admin@kilmartin.org

CRAIGNISH VILLAGE HALL

For regular events such as Coffee Mornings, “Keep Fit” and “Knit and Natter” please check their website. www.craignishvillagehall.org.uk or their Facebook page. E-mail: cvhartsevents@gmail.com or by phoning Tel: 01852 500746

CHURCH OF SCOTLAND SERVICES

SCOTTISH EPISCOPAL CHURCH SERVICES - St John’s Cathedral, George Street, Oban.

Sunday	8 a.m. Holy Communion
	10.15 a.m. Sung Eucharist (Fourth Sunday – Choral Matins)
Wednesday	11 a.m. Holy Communion

CATHOLIC CHURCH SERVICES - St Columba’s Cathedral, Oban.

Saturday	6 p.m. Vigil Mass
Sunday	10.30 a.m. Sunday Mass

CHURCH OF SCOTLAND

We hold church services every alternate Sunday in Kilmelford and Kilninver Parish Churches to which all are welcome. Services are held at 12 noon.

Kilmelford Church is in the middle of the village and the car park is behind the church.

Kilninver Church is half a mile off the A816 road to Oban. Take the turning to Easdale. You can park on the roadside.

Dates for 2015

	Kilmelford	Kilninver
March	1, 15, 29 Friday 6, World Day of Prayers 7.00pm	8 Elders lead, 22
April	5 Easter Communion 8am 12, 26	5 Easter Day, 19
May	10, 24 31 United Service Arduaine Garden	3,17, Time T.B.C.
June	7 Communion, 21	14, 28
July	5, 19	12, 26
August	2, 16, 30	9, 23
September	13, 27	6, 20
October	11, 25	4. 18
November	8 Remembrance, 22	1 Communion 15, 29
December	6 , 6 5pm Christingle, 20 Nativity Service 25 Christmas Day 11 am	13, 27 8 Advent Communion 6pm 24 Watchnight 11.30pm

Every Sunday there is a service of worship at Craignish Parish Church, Ardfern at 10.15am. Times for the United Services and notices for Christmas Services will be posted locally and on the website www.netherlornchurches.org.uk.

On 1st Sunday of each month except July & August, children are welcome to join Xplorers and a short Prayz Service at 4pm in Kilmelford Church. Children under 5 yrs old must be accompanied by an adult.

**** Please note there will be no 12 noon Service at Kilninver on Sunday 20th Sept.**

A Life and Death Matter – the Weather

None of us have been too impressed with the weather in Argyll this summer. Farmers, gardeners, visitors, all of us have heaved a sigh as we looked out on another damp, cold day. We ponder the question of what is disturbing our accustomed patterns of weather and perhaps pay more attention to the upcoming UN climate change summit being held in Paris later this year.

Over the past few years our churches have been forming a friendship with a congregation at Bemvu in Malawi. We exchange information and aim to learn from each other so as to strengthen church life at either end. We have now started a kind of “penpal” arrangement where individuals can correspond with each other.

Most people at Bemvu are subsistence farmers, growing their own food on a small plot of land. This means that for them the weather is really a matter of life and death. Maize is their staple crop and it grows well in a typical Malawi rainy season when there are 3-4 months of sunny days with frequent showers.

Unfortunately this year there was an excess of rain at the start of the season so the ground was swamped and germination of the seeds did not go well. Then the rain abruptly stopped completely and drought conditions led to withering of the plants which had survived. The result is a very meagre harvest and a very uncertain future as people know their food supplies will run out long before the next growing season.

While we aim to share our experiences at many different levels, the urgency of the food shortage is inevitably a primary concern at present. Anything we can do will be small against the scale of the problem. But better to light a candle than to curse the darkness. Over the past two years we have raised funds at harvest time to help 40 poor families with farm inputs. We are looking to step up the effort this year.

Our connection to our friends in Bemvu makes vivid for us the irony that it is those who have done least to cause climate change who suffer its effects most severely. The least we can do is show our solidarity with one heavily affected community to which we are connected. And find fresh impetus in our efforts to attain a sustainable lifestyle.

Kenneth Ross (Parish Minister)

ACTIVITY REPORTS

Parish Picnic 20th June

The weather for the picnic was not kind enough for the Kilmelford & Kilniver families to set off for Barnacarry beach so we took over the village hall and took out all the sports equipment. Meanwhile some Kilbrandon folk met at the beach in coats & waterproofs with Ken and ate their picnic lunch. A happy outcome at the hall was the kind offer from Helen & Brian Laws to help teach the local children, how to play badminton.

Parish Walk 28th June

Seven walkers were left at the Loch Avich end of the Sreigne Road to walk over the hill to Scammadale where they were met by others from Netherlorn walking in the glen. Everyone met at Scammadale Farm to enjoy refreshing drinks and a bar-b-que. Many thanks to the McCorkindale family for acting as hosts. All agreed it was a very enjoyable afternoon & shared parish event.

STAMP APPEAL 2015

The Church of Scotland HIV programme currently supports 29 projects in 17 countries. The projects we support at home and overseas run education awareness programmes, support orphans and vulnerable children, train volunteers to provide home-based care, facilitate support groups for people living with HIV so that they can live positively in every sense of the word. They also challenge the stigma and discrimination which so often accompanies an HIV+ diagnosis.

The monies from the sale of stamps is a vital contribution to funding this valuable work.

Please keep all stamps throughout the year & collections can be left with Georgina Dalton or Mary Clark or left at the Shop. - Many Thanks

XPLORERS

Leaders met on 17th August to plan the theme & content for the next sessions. Our first gathering will be on Sunday 6th September - 4pm for crafts & activities and 4.15pm for tea & refreshments & Prayz Time. All Welcome.

Contacts: Georgina 01866 844212, Jenny Moody 200222, Rachel Ross 200235

BIRTHS

Callum Alexander Clark

Congratulations to Roanna & Findlay and welcome to Callum. Born 26th June 2015 8lbs 6oz – both sets of grandparents are delighted.

NOTES FROM ARDUAINNE GARDEN

As I write early in August the rain is bucketing down; I really can't remember when it was this persistent. 2015 will certainly be a year to remember, but I wish that we could rewind and begin again – it could only be better! Having said that, we had a good display of our usual camellias, magnolias, rhododendrons and azaleas this spring. Several of our wonderfully scented *Maddenia* rhododendrons flowered for the first time, including a new planting along the Cliff Path. It's been a good year for these tender plants and we've been adding to the collection for many years. We must have one of the best collections around, I think, having gathered new species and varieties from gardens up and down the country, many from conservatories in those colder gardens where they can't be grown outside. Even now a couple of *Rhododendron crassum*, one of the *Maddenia* series, are still in flower – they are quite variable and we have plants of the same species from many different provenances.

I came down to the garden this morning to find that the second half of our large and beautiful *Eucryphia glutinosa* had come down. This lovely summer-flowering plant is growing just above the main lawn at the bottom of the Cliff slope and could be seen in full flower from the lawn and below. The first half split apart from the rest a few months ago – these trees are really large shrubs which have a number of stems growing from the base, so they tend to split open as do *griselinia*, which have the same habit. It was a great shame as it was just about to flower. We do have one other specimen higher up on the Cliff, but that's beginning to look a little doubtful too and I must think about planting a replacement some time. We do have quite a few *Eucryphia* species and hybrids in the garden, six or seven as I recall, but *E. glutinosa* is my favourite. The Hillier Manual of Trees & Shrubs describes it as 'One of the most glorious of woody plants' and being the only deciduous species it has beautiful yellow autumn colour too.

One of the positive features of this dreary year has been the greatly extended spring season, due to an unusually cold May. In an average year most of the rhododendrons and azaleas are past their best by the middle of May, but this year they were still looking good into the middle of June and beyond. Even now it's possible to find the odd flower on some of the camellias up on the Cliff Path! Unheard of! The most negative feature has to be the weed growth; we can usually keep up with it but this year it's really been a struggle, together with the flopping foliage of shrubs and perennials along most of the

paths after days of heavy rain. In spite of all this we've been favoured with many excellent reviews on TripAdvisor, apart from one which stated that he could see 'Nothing Special' about the garden and was surprised that the NTS bothered to keep it open! Even allowing for my bias I feel that this was a little harsh!

Moving into the late summer period our hydrangea collection is coming into its own. Some of the new varieties are very vigorous with vibrant colours, especially 'Zorro', which also has dark purple stems. Fuchsias too are looking good – both of these genera enjoy cool, moist weather. *Fuchsia* 'Lady Bacon' is particularly good and one of the most colourful of the magellanica types. This is growing at the foot of the Cliff slope above the Top Lawn and is full of flower at the moment.

But one of the charms of Arduaine is the sheer variety of plant life. Sarracenias, or pitcher plants, are good at the moment down beside one of the ponds, as are *Primula florindae* and *Lilium nepalense*. There are ferns and perennials far too numerous to mention; do come along and see for yourselves, but be prepared to take your time and look beyond the obvious!

And as usual, can I ask that if anyone feels that they can help the garden in any way at all, please email me or give me a call.

Maurice Wilkins - mwilkins@nts.org.uk - 01852 200366

FIRE STATION

As Dave Millward mentioned in the last newsletter, he was due to retire (and achieved his objective 20th June). May we wish Dave (and of course his wife Lill) all of the very best in his (their) their new pursuits. On behalf of the local community may I thank Dave for all of his efforts and achievements over the time he was Crew Manager at Kilmelford Community Fire Station. Dave has informed me that the new Officer in Charge is Donald Smith, and we wish all the best to Donald in his new role. Once he has settled in I shall no doubt start pestering him for a contribution to the December newsletter.

Also in respect of the KCFS: August saw the departure of two (or should that be three) of the local crew members, namely Ian and Mel Mctavish (not forgetting Hamish!). May we wish Ian, Mel and Hamish all the very best in their new adventures in Australia. (Ed)

USEFUL INFORMATION

EASDALE MEDICAL PRACTICE

Normal working hours for phone calls are 8 a.m. – 6 p.m. Monday to Friday. Tel: 01852 300223.
In case of emergency outside normal working hours, dial 999 for an ambulance.
For health advice, phone NHS 24 Tel: 111

GLASGOW AND WEST OF SCOTLAND BLOOD TRANSFUSION SERVICE **BLOOD DONATION SESSIONS 2012**

Tel: 0845 90 90 999 or 0141 357 7700

Dates of future blood donation sessions are posted on www.scotblood.co.uk under "Where to Donate" In order to meet hospital requirement for blood and blood products, 1,000 blood donors are needed every day in Scotland. Only 5% of the eligible population currently give blood. New and returning blood donors are urgently needed.

LOCAL DIRECTORY

The Local Directory is on sale at £1 a copy at Kilmelford Village Shop (Post Office) or by contacting Georgina Dalton on 01866 844212.

KILMELFORD VILLAGE SHOP

01852 200271

UNDER
NEW
OWNERSHIP

Relaxed friendly atmosphere, and a smile

**SELECTION OF COFFEES AND HOMEMADE PIES,
LOTS OF NEW LINES AVAILABLE AND IF WE DONT
HAVE IT JUST ASK US.**

**GROCERY BOXES CAN BE ORDERED FOR HOLIDAY
COTTAGES AND BOATS JUST CALL WITH YOUR
REQUIREMENTS AND WE WILL DO OUR BEST.**

NEWSPAPERS ARE AVAILABLE DAILY

**POST
OFFICE**

PLEASE REMEMBER OUR POST OFFICE IS ALSO
AVAILABLE with a ATM WHICH TAKES MOST MAJOR BANK
DEBIT CARD TO WITHDRAW CASH FREE OF CHARGE

or just come in for a chat, we specialise in that

KILNINFORD NEWS

NOTICE OF MEETING: EGM Kilninford Association 2015

The Kilninford News is a newsletter produced entirely by volunteers, and its income is derived only from advertising. The news team currently consists of Gill Philpotts (distribution), Mark van der Kraan (IT), Val Wardle (advertising) & Graham Wardle (editor). We are very grateful to all those who continue to advertise with us, albeit we are constantly looking for additional advertising income - **if you can help us please do so!** Likewise, we really appreciate the time and effort from all of you who provide contributions to the newsletter (which are again done on a voluntary basis - thank you!). We hope that you, and any potential contributors out there, will continue to support us.

The Kilninford News is produced under the articles of the Constitution (dated 05-April-2015) of the 'Kilninford Association 2015'. The primary purpose of the Kilninford Association 2015 is, as a non-profit organisation, to provide the Kilninford News to local residents within the Kilmelford, Kilnilver and surrounding area. By helping us with the newsletter it will directly benefit the local community.

Under our constitution there is a formal need to hold an Annual General Meeting, however, since the Kilninford Association 2015 has only recently been formed, then in lieu of an AGM an Extraordinary General Meeting (EGM) will be held to disseminate information throughout the local community, and to provide an opportunity for a question and answers session..

All local community residents are eligible to attend this EGM. The meeting will consist of: a very short overview of the Constitution, followed by the main topic of the meeting which will concentrate on how the Kilninford News keeps the community informed of local events. The main question to be posed to the community is **"How can the Kilninford News best benefit the needs of the community?"** Some other questions to be posed are: "What should the KN include within its pages?"; "How often and when should it be produced?"; "How is it to be financed?" and "To whom should it be distributed?"

The EGM is to be held at the **Cuilfail Hotel Kilmelford** on **Wednesday 4th November 2015. Starting time 19:30.**

It is hoped that all of our Kilninford News contributors and advertisers will attend along with members of the local community. This event will provide an opportunity for us all to meet in friendly surroundings and get to know each other (especially for us part-time locals). It will give us all an opportunity to build on established relationships and to form new ones that will enable the Kilninford News to achieve its objective of "... disseminating information throughout the community; to ensure that all residents have access to information of interest, use or value, including activities, events, notices, services, and news....".

On behalf of the KN Team may I thank Yvonne and Simon for allowing us the use of the facilities at the Cuilfail Hotel. Best wishes to all.

Graham (ed)

Colin Clark Plant Hire

Based in Kilmelford

- **Established 1978**
- **Operated JCBs for hire**

Site clearance - Excavations

Drainage - Landscaping

Road clearance - Rock breaker

Tel: 01852 200259

Mobile: 07769 717482

Email: ColinClark11@btinternet.com



KILMELFORD & KILNINVER COMMUNITY ASSOCIATION

Chair	Antoinette Mitchell	
Treasurer	Fergus Gillanders	
Secretary	Diane Scaife	
Committee members	Matthew Anderson	
	Ellen Coyle	
	Lucy Files	
	Maggie Morsley	
Caretaker	Colin Gibson	01852 200204
Bookings	Kilmelford Village Stores	01852 200271

KILMELFORD & KILNINVER VILLAGE HALL CHARGES

ALL BOOKINGS TO BE MADE AT KILMELFORD VILLAGE STORES Tel 01852 200271

SPORTS

Squash:	£5.00 per hour all categories
Badminton:	£5.00 per hour all categories
Junior Football:	£5.00 per hour
Indoor Tennis:	£5.00 per hour

HIRE CHARGES

	LESSER HALL	MAIN HALL
Charity Fund Raisers	£2 per hour	£5 per hour
Social use other than charities	£4 per hour	£7 per hour
Commercial use	£8 per hour + £25*	£15 per hour + £25*

The £25.00 charge is for the Caretaker to set up the tables and chairs beforehand, and clear up afterwards. Above charges include kitchen power and use of equipment for light refreshments and drink preparation only. Additional use of kitchen cooking facilities for preparation of hot food is **£10.00** per event

EVENTING DANCES & FUNCTIONS	5 p.m until 11 p.m (1 a.m for dances)
Charity	£65.00 per session Deposit £20.00
Private	£65.00 per session Deposit £20.00
Commercial	£90.00 per session Deposit £50.00

Above charges include kitchen power and use of equipment for food and refreshment preparation
After use the Hall must be left clean and tidy. Failure to do this will lead to a further charge of £50.00

HIRE OF EQUIPMENT

Residents of Kilmelford, Kilninver and Arduaine may hire equipment, and by special arrangement for those resident outside the area.

Tables £5.00 per day. Chairs £3.00 per day. Prices of cutlery and crockery on request.

A full list of rates and availability can be obtained from the Hall Caretaker.

HEATING CARDS FOR MAIN & LESSER HALLS - £1.50 each

HALL CARETAKER - Colin Gibson Tel: 01852 200 204 or 07825 987 696

Come and try the fun-filled
Melfort Ukuleles

The group meets every Wednesday,
starting 31st September 2015
7.30-9.30pm in Kilmelford Village Hall
£4 per person or £6 per couple

Children under 18 Free of Charge (if accompanied by a parent)

No Membership Fee. Price includes instruction, music and tea/coffee/biscuits.

All ages welcome – no previous musical knowledge is required and there's usually a spare ukulele available to try.

Melfort Ukuleles focuses on enjoying music together, laughing, singing and learning a great little instrument at the same time.

Call Sarah Whittle on 01852 500790 or email sarah@musicforlife.info if you have any questions, or why not just come along one week to give it a try.



Cuilfail Hotel

Great food every day.

Bar & Bistro menu

All homemade by our team of skilled chefs

5.30 – 9.00 evenings, Lunches 12 – 2.30

Fantastic coffee every day from 11.00

Bar open all day everyday

Take away Menu also available (see separate advert)

01852 200274



KILNINVER AND KILMELFORD COMMUNITY COUNCIL

KILNINVER AND KILMELFORD COMMUNITY COUNCIL 2015 – CONTACT LIST

NAME	ADDRESS	TEL. NO.	E-MAIL	POSITION
Nigel Mitchell	Kilniver	01852 316151	nigel@themitchells.co.uk	Chair
Antoinette Mitchell	Kilniver	01852 316151	toni@themitchells.co.uk	Secretary
Alison J Rentoul (Jane)	Kilmelford	01852 200331	j.rentoul@btinternet.com	Minutes Secretary
Colin Clark	Kilmelford	01852 200259	colinclark11@btinternet.com	
Stuart Cannon	Kilmelford	01852 200205 01852 200286	stuartcannon@kames.co.uk	Treasurer
Annie Delap	Kilmelford	01852 316240	patandannie@gmail.com	
Jamie McAndrew	Kilmelford	01852 200286	hatchery@kames.co.uk	

MINUTES OF MEETING - TUESDAY 14th April 2015

8 p.m. KILMELFORD VILLAGE HALL

Present: Nigel Mitchell (NM); Stuart Cannon (SGC); Antoinette Mitchell (AM); Jane Rentoul (JR); Colin Clark (CC); Jamie McAndrew (JMCA)

In attendance: Councillor Elaine Robertson (ER); Keiron Green; Shaun Davidson, Area Manager, Social Work, Argyll & Bute Council; Hilary Brown, representing Caroline Henderson, Clinical Services Manager, Lorn and Islands Hospital.

1. APOLOGIES - Annie Delap; Councillor Duncan MacIntyre

2. MINUTES OF MEETING held 10th February 2015 - Proposed by AM and seconded by CC to be a true and accurate representation of the meeting.

3. DECLARATIONS OF INTEREST - There were none.

Shaun Davidson was introduced and took the meeting through the previously distributed brochure regarding Reshaping Care for Older People to enable people to live long, healthy, active and happy lives in Argyll & Bute. The integration of health and social care is legally required by the Scottish government to be in place by 1st April 2016. Argyll & Bute had hoped its plan would be implemented by 1st April 2015 but is now more likely to be end Summer/early Autumn, owing to a required inspection taking longer than expected. The public are asked to make any comments at www.healthytogetherargyllandbute.org.

Matters raised at the meeting included the problem of recruitment of carers as there are simply not enough people available. This is a national problem, not just in Argyll and Bute. There is a need to raise the profile of caring, starting in schools and colleges, to make it more valued and better remunerated and therefore more attractive to people.

For information generally about healthcare there is a new website up and running which gives comprehensive information concerning Lorn and Islands Hospital in Oban at www.obanhospital.com, listing departments, services, contact phone numbers etc for the general public.

4. MATTERS ARISING FROM THE LAST MEETING

a) COMMUNITY EMERGENCY PLAN - JMCA reported that the draft plan has been submitted to Carol Keely at Argyll & Bute Council. Anyone wishing a copy to contact JMCA. In connection with this emergency planning NM announced that a benefactor, who wished at this stage to be anonymous, has offered to fund the purchase of two defibrillators, one for Kilninver and one for Kilmelford. ER undertook to find out about the permission required and suitable location for installing one at Kilninver School. SGC stated that the Argyllshire Gathering Christmas Ball has offered £350 and this, along with the £250 previously donated by the Kilniford Newsletter team, means that there will be a fund of £600 for any future expenses in connection with maintaining and operating the defibrillators. The meeting expressed its gratitude to the individual and the two groups for their generous donation to the community of this life-saving equipment.

b) CARRAIG GHEAL COMMUNITY BENEFIT FUND - NM and David Wilkie attended a meeting of the Steering Committee which will decide on the disbursement of funds. NM and David Wilkie can decide on application of funds (£1000 annually for 25 years per community, maximum of £250 at a time). If not applied for in any one year it can be carried forward. It cannot be awarded for any function that is currently carried out by Argyll & Bute Council. The possibility of all community councils affected joining together to use the funds for a major project such as improvement of broadband across the area was put forward as a suggested use of the funds. Community Councillors present agreed to administering the grants (a requirement of the scheme).

c) GLENMORE FARM WOODLAND CREATION - There will be a drop-in session on Saturday 2nd May 2015 from 10 a.m. to 12 noon. The draft scheme, which has been produced and can be obtained from Stuart Cannon (stuartcannon@kames.co.uk; 01852 200286) on request, can be refined as a result of comments made by the public on 2nd May. People are urged to look at the plan before attending.

d) GLEBE STREET NUMBERING - NM reported that there was a problem with the way the roads in the Glebe at Kilmelford are numbered, the emergency services having had difficulty finding certain houses. Lucy Files has come up with a more easily understood and logical way of indicating the street numbers in any one road and has suggested amending the plan to reflect this. ER undertook to speak to Graham Stone of the Roads Department on the matter.

5. PLANNING APPLICATIONS

Pending Consideration:

Lagganmore Kilninver Oban Argyll and Bute - Site for the erection of dwellinghouse, demolition of existing buildings and amendments to existing access tracks

Plot 1 Ref 15/00700/PPP; Plot 2 Ref 15/00701/PPP; Plot 3 Ref 15/00702/PPP; Plot 4 Ref 15/00703/PPP.

Tigh Na Mara Kilmelford Oban Argyll and Bute PA34 4XD - Erection of dwellinghouse with attached garage Ref 15/00538/PP.

Pending Decision:

Glenmore Steading Kilmelford Oban Argyll and Bute - Renewal of planning permission

reference 11/02141/PP - Partial demolition, alterations and extension of existing steading to form 12 dwellinghouses and associated storage building Ref 15/00658/PP.

The Steading Kilmelford Argyll and Bute - Partial demolition, alterations and extension of existing steading to form 12 dwellinghouses and associated storage building Ref 15/00667/LIB.

Permitted Development:

Land adjacent to 10 Cuilfail Cottages Kilmelford Argyll and Bute - Installation of telecommunications cabinet Ref 14/02775/TELNOT.

Prior Notification - no objection:

Raera Forest Kilninver Argyll and Bute - Rural Development Contract Ref 14/02839/RDCRP.

6. CORRESPONDENCE

The next meeting (9 June 2015) will incorporate the AGM. Any invoices to be submitted to SGC by end April.

7. ANY OTHER COMPETENT BUSINESS

a) Celtic Sea Ltd. SGC reported that he had had great difficulty in making contact with the mussel farm following a request from the Community Council meeting in February to do so regarding pontoons, mussel floats and general debris over a large area of the foreshore of Loch Melfort adjacent to and further away from the mussel farm. Concern was expressed by the meeting that nothing has been done to remove the eyesore this creates and which has been evident on the shore for many years now. Any approaches to Celtic Sea to remove the mess have been rebuffed. In an attempt to finally get something done about the situation, the meeting requested SGC to approach the Crown Commissioners and ER undertook to raise the matter with the Council Planning Department.

b) The meeting expressed their appreciation of the speedy action by the Roads Department immediately after the last meeting to clear the Eathie layby of screening trees and thanked ER for her assistance in the matter.

c) Anyone wishing to organise a community emailing list should contact JMCA or Fiona Wyllie.

d) The issue of speeding in the 30 mph limit in Kilmelford was raised and the generally acknowledged deterrent of a flashing 30 mph sign was considered worthy of investigation. ER and NM to contact Constable Jeremy Moore regarding reintroducing regular police speed checks in the village.

e) Keiron Green advised of proposed rearrangement of Ward boundaries and stated that Boundary Review Scotland would be seeking consultation in due course, giving the public a chance to comment.

f) The matter of the ill-positioned large brown tourist sign in Kilmelford was raised. Particular concern was the fact that it appeared with no consultation having taken place. This matter was first raised at 11 February 2014 Community Council meeting when it was stated

that it was in the wrong place, leading to confusion as to the location of the Loch Melfort Hotel - people heading down Degnish Road over 4 miles in the wrong direction as a result. ER undertook to speak to the Roads Department.

ER also undertook to raise the matter of the broken sign (3 bar) counting down to 30 mph approaching Kilmelford from the south, it having been placed too close to the side of the carriageway initially and raised at previous community council meetings when it was only slightly bashed. Now it is completely broken. ER also undertook to bring the attention of the Roads Department to a further sign denoting an upcoming bend just south of the entrance to Kames Pier which has rotted at the foot of the supporting poles and as a result has swung to the side and is therefore not facing the oncoming traffic.

g) The telephone numbers for Oban Police Station in Albany Street (01631 510 500/501 are no longer in operation. The public should now dial 101 to contact Oban Police Station.

There being no further business the meeting closed at 9:55 p.m.

Date of next meeting: 9th June 2015.

KILNINVER AND KILMELFORD COMMUNITY COUNCIL

MINUTES OF MEETING - TUESDAY 9th JUNE 2015

8 p.m. KILMELFORD VILLAGE HALL

Present: Nigel Mitchell (NM); Stuart Cannon (SGC); Antoinette Mitchell (AM); Jane Rentoul (JR); Colin Clark (CC); Annie Delap (AD); Jamie McAndrew (JMCA). 6 members of the public.

In attendance: Councillor Elaine Robertson (ER); Councillor Roddy McCuish; Keiron Green; Deirdre Henderson, Argyll & Bute Libraries

1. APOLOGIES - Councillor Duncan MacIntyre
2. DECLARATIONS OF INTEREST - There were none.
3. APPROVAL OF MINUTES OF MEETING HELD 14 APRIL 2015 - Item 4b Carraig Gheal Community Benefit Fund - it was drawn to the Chairman's attention subsequent to the meeting that the life of the fund is 25 years, not 20 years as stated at the meeting. With this amendment CC proposed and SGC seconded that the minutes were a true and accurate representation of the meeting.

4. MATTERS ARISING FROM THE LAST MEETING

a) COMMUNITY EMERGENCY PLAN - ER reported that informal discussion with Argyll & Bute Council has resulted in a generally favourable reaction to the proposed defibrillator for Kilninver being located at the school, although she is awaiting a formal response. A copy of the plan has been given to the staff at Kilninver School. ER undertook to find out if staff would be willing to train to operate the machine, although wider members of the community would also require to do this. Precise location of the machine is yet to be decided upon.

b) GLEBE STREET NUMBERING - ER reported that Graham Stone, Roads Department, is happy to go ahead with the suggested signage in the Glebe in Kilmelford. ER also stated that, while on the subject of signs, a survey is being undertaken at present of all road signs on the A816.

The meeting expressed concern yet again at the wrongly located large brown sign in the middle of Kilmelford village.

CELTIC SEA LTD - SGC reported that the staff at Kames Fish Farm have removed much of the rubbish on the shore at Celtic Sea, in spite of being unable to make contact with the owner. The sole employee left at Celtic Sea has undertaken to dismantle one of the remaining rafts which Kames were unable to get to, although he is lacking suitable equipment. There is a further large raft on the shore which Celtic Sea says is nothing to do with them and which has been on the shore for a number of years. Upon investigation it was found to be full of cement. Kames is prepared to break it up but would need guidance - possibly from Crown Estate - as to where it should be removed. Councillor McCuish offered to make enquiries and advise SGC. The meeting thanked SGC for undertaking to provide Kames staff in the operation to clear the shore of the considerable amount of long-standing debris.

MACMILLAN CANCER INFORMATION AND SUPPORT SERVICE

Deirdre Henderson, Service Manager for the above and based in Argyll and Bute Council's Library Service, gave a short address to the meeting outlining a new strategy which will be in place in Oban Library from November. In this new initiative, what the NHS provides will now be complemented by non-clinical support. She passed round copies of a number of very informative booklets covering all aspects of cancer, ranging from how to talk about cancer, talking to children, legal issues, finance, practicalities of end of life, work issues, carers, support after treatment ends etc. These will be available at the Library, along with the offer of emotional support and the opportunity to have a cup of tea and a chat in a homely atmosphere at a drop in session once a week. They will be looking for volunteers who will be trained, with ongoing support. A consultation day in Oban Library is planned for the end of July. Further information: Deirdre Henderson Tel: 01586 555937. deirdre.henderson@argyll-bute.gov.uk www.argyll-bute.gov/macmillan

4. MATTERS ARISING FROM THE LAST MEETING

- a) Community Emergency Plan - JMCA has distributed the plan around the area. It is a living document and consequently open to changes.
- b) Carraig Gheal Community Fund - NM and David Wilkie attended a meeting in May. The initial £1000 in the annual fund is now £2000 as the fund has been running for a year. The £2000 is therefore a one off and will revert to £1000 annually. The fund will be administered by NM and David Wilkie through the Community Council, SGC to advise NM of bank details and proposed method of distributing the funds.
- c) Glenmore Farm Woodland Creation - a revised plan which has taken into account views expressed at the latest drop in session for the public has been published via the Community Council. People who attended the latest drop in session at Kilmelford Village Hall and who asked to be kept informed of developments expressed concern that they have not received any communication from the Forestry Commission. The possibility of holding a separate meeting to enable members of the public who had not received notification of the amended plan to be informed of the changes was considered. After much discussion NM decided that there was very little point because there would be an opportunity to put the community's views through the Community Council once the application has gone in to the planners at Argyll & Bute Council. Meanwhile the public can comment individually direct to the Forestry Commission.
- d) Glebe Street Numbering - see 4b above.

5. PLANNING APPLICATIONS - List not to hand at meeting. List below dated the following day - 10 June 2015.

Pending Consideration:

Arduaine House Arduaine Oban Argyll PA34 4XQ - Alterations and erection of entrance porch. Ref 15/01287/PP

Lagganmore Kilniver Oban Argyll and Bute - Site for the erection dwellinghouse, demolition of existing buildings and amendments to existing access tracks. Plot 3 Ref 15/00702/PPP; Plot 4 Ref 15/00703/PPP.

Pending Decision:

Farm House Arduaine Oban Argyll and Bute PA34 4XQ - Change of use of dwellinghouse to general agricultural store. Ref 15/01281/PP.

Permitted Development:

Kilniver Telecommunications Mast Kilniver Argyll and Bute - Installation of 2 replacement panel antennas on existing 18 metre high lattice tower and replacement ancillary apparatus. Ref 15/01434/TELNOT

Kilmelford Telecommunications Mast Kilniver Argyll and Bute - Installation of 2 preplacement panel antennas on existing 15 metre high lattice tower and replacement ancillary apparatus. Ref 15/01433/TELNOT

Application Permitted:

Lagganmore Kilniver Oban Argyll and Bute - Site for the erection dwellinghouse, demolition of existing buildings and amendments to existing access tracks. Plot 1 Ref 15/00700/PPP Plot 2 Ref 15/00701/PPP

Traighuaine Ard Arduaine Oban Argyll and Bute PA34 4XQ - Partial change of use of dwellinghouse to use lower ground floor to provide self catering accommodation. Ref 15/00901/PP

Land West of Hill House Arduaine Oban Argyll and Bute PA34 4XQ - Site for the erection of dwellinghouse. Ref 15/00876/PPP

Discussion took place regarding ease of obtaining information on status of any planning application. NM offered to produce a step by step guide to finding such information on the Argyll & Bute website and would email this through to community council members.

6. CORRESPONDENCE

a) Rona Gold, Community Planning Manager Community and Culture, Argyll & Bute Council, replied to concerns expressed at a recent community council meeting regarding Broadband for our area.

Extract from her email:

In the Kilmelford area, BT Openreach are working on behalf of HIE to bring next generation broadband to the area through the Highlands and Islands Project. The first live connections are expected by the summer. Unfortunately they are still evaluating the Kilniver exchange area so there are no plans for deployment currently. The interactive map at www.digitalscotland.org/whereandwhen allows people to get the most up to date information for their premises and it will indicate when they can order the new fibre service.

General information on mobile and broadband coverage is available from www.argyll-bute.gov.uk/superfast-broadband which is updated as we become aware of progress.

She added that a colleague, Shona Barton at Argyll & Bute Council, was looking into the issue - also raised by us - of BT response times.

b) Seil and Easdale Community Council has approached us regarding a presentation from the community to Dr. George Hannah who has recently retired. The meeting agreed in principle to contribute to this and further information will follow.

7. ANY OTHER COMPETENT BUSINESS

a) ER reported that integration of Health and Social Work is progressing and should be in place by 1st April 2016.

b) The question of budget cuts in Argyll & Bute generally affecting, among other things, care for the elderly was raised. ER said that the cuts will fall right across the board, affecting all departments. Councillor McCuish put forward the view that the Council should be looking at generating income, not cutting all the time. He cited grass cutting contracts, which are carried out by the housing associations, could be done by the Council as the infrastructure - depots, machinery and men are already in place and if Argyll & Bute Council bid for these contracts jobs could be retained, instead of

laid off owing to the budget restraints. He also suggested that services could be shared with councils on our borders, such as Highland and Dumbarton. Gritting of roads, amongst other tasks, could be more streamlined and carried out more economically, to the benefit of the budget. ER pointed out that all Councils are affected by the need to make cuts, it is not just Argyll & Bute.

c) NM reported that it had come to his attention that in future Kilniver and Kilmelford Community Council might not come under Oban, Lorn and the Isles. There has been no consultation or correspondence on this matter and it would be likely that we would now come under Mid-Argyll. ER said that consultation will take place. It was agreed by the meeting generally and forcefully that being moved away from the Oban area would be quite unacceptable. NM paid tribute to the good working relationship this community council has had with Oban and in particular his gratitude to ready assistance over the years from Councillor McCuish.

JMcA asked what was driving the redistribution and KG replied that it has been proposed as a result of a review by the Scottish Government across the whole of Scotland, whereby they wish to allocate more councillors to deprived areas, e.g. Glasgow. The total number of councillors will not be cut which means that councils outwith these deprived areas will be allocated a reduced number.

d) The matter of non-attendance of two of our councillors at Community Council meetings was raised. The meeting expressed extreme disappointment that Councillors Iain Angus Macdonald and Iain Stewart Mclean did not attend meetings or even send their apologies. A view was expressed, to general agreement, that they would be more likely to attend around election time.

There being no further business, the meeting closed at 9:45 p.m.

Date of next meeting: Tuesday 11th August.

PLEASE NOTE: Ward Boundary Changes

Hopefully a number of you will have read in a recent edition of The Oban Times, about the Scottish Governments plan to change ward boundaries. Oban, Lorn and the Isles is currently split into two wards, Oban South and the Isles and Oban North and Lorn.

How does this affect Kilmelford and Kilniver? We would become part of Mid-Argyll and our sphere of influence would transfer from Oban to Lochgilphead. We would also lose the four present councillors like Elaine Robertson who are attached to our community council and these would be replaced with just three new ones.

When the changes were announced in June A and B council said it was opposed in principle to the plan, similarly at our last KKCC meeting all committee members present and those in attendance were also against the proposal.

Councillor Elaine Robertson said 'I have grave concerns that these proposed boundary changes will have on our established area and the local links of the communities within it. Oban is the natural hub in North Lorn, for administration, local council services and larger social activities and gatherings.' She went on to say, She felt 'the geographical spread of the new boundaries had not been fully considered. It is a long way from Lochgilphead to Glen Orchy.' Councillor Robertson was concerned about the impact changes would have on the present communities within the ward. She felt the consultation needed to be made as public as possible. Hence the reason for my submitting this article so as all in the Kilniver and Kilmelford area will be made aware of these proposed changes.

The public Consultation will run until October 22nd. And further information is available at Council Offices. Comments on the proposals can be submitted through the commission's consultation portal website at: www.consultation.lgbc-scotland.gov.uk by email to lgbcscottishboundaries.gov.uk or in writing to Thistle House, 91 Haymarket Terrace, Edinburgh, EH12 SHD.

Antoinette Mitchell (Secretary KKCC)

Ardmaddy Castle Holiday Cottages And Gardens



Five holiday cottages in stunning locations, all with enclosed gardens, open fires or woodburners and everything you need for your holiday. Sleeping between 4 and 12, there is something for everyone. Wonderful opportunities for bird and wildlife watching, walking, cycling, sea-kayaking, sailing, fishing or just relaxing. Come and have a look while you are in the area!

Castle gardens open every day to the public. An impressive collection of plants, trees and shrubs in a scenic and peaceful environment. Seasonal vegetables for sale.

Ardmaddy, by Oban, Argyll, PA34 4TW
Telephone 01852 300778

www.ardmaddy.com : jan@ardmaddy.com



MELFORT VILLAGE



IMAGINE HAVING ALL THESE FACILITIES ON YOUR DOORSTEP..... WELL
ACTUALLY YOU DO!

JOIN US! Becoming a local member is easy...

1. You can buy a time-share week for as little as £10; this is a one-off payment to own the week for ever. Some purchases include the first year's fees. (The Annual Maintenance Fees are between £440 & £600.)
2. Members enjoy year-round use of our excellent leisure facilities which include an 11m indoor swimming pool; a small well equipped gym; sauna; games rooms; kid's play room; all-weather tennis court; brown trout fishing ; putting green & playground.
3. Members can enjoy a week's holiday at Melfort, worldwide using an exchange programme, or allow Melfort Village to rent out your week on your behalf and collect the proceeds (terms and conditions apply).

PLEASE PHONE US ON 01852 200257
or DROP IN FOR A VISIT

www.melfortvillage.co.uk





Kilmartin Museum 2015

Events

'The Iron Age of Kintyre'

1st June to 1st December 2015 at Campbeltown Museum

An exhibition that includes photography, pottery, music and sound, jewellery and model artwork by the pupils of Drumlemble and Carradale Primary Schools, Campbeltown.

Museum open: Monday & Tuesday and Thursday & Friday 9am to 5.00pm

Wednesday 10am to 5pm.

Closed lunchtime 12.30 to 1.30pm

Free Admission

For more information contact: education@kilmartin.org or call 01546 510278

Funded by A&B council and Museums Galleries Scotland

Children's Summer Activities

Kilmartin museum will be running a series of weekly workshops for children throughout the summer – see our website for more details, call 01546 510278 or email education@kilmartin.org

Scottish Crofting Federation

Practical Skills Crofting Courses

Scottish Crofting Federation (SCF) - Practical Courses

These courses are for new or aspiring crofters, smallholders or anyone interested in this traditional way of life.

Members of the Scottish Crofting Federation will receive a discount

Saturday & Sunday 3rd & 4th October 2015

Entry Level Induction Crofting Course

Cost; £60 (£50 if SCF member)

Please contact education@kilmartin.org or telephone Julia on 01546 510278 for more information and booking.

Kilmartin Museum Café and Shop

Drop by Kilmartin Museum Café and join our team of enthusiastic staff for delicious, fresh food served in a relaxed and friendly atmosphere. Whether it's decadent cake and coffee or a luscious lunch you seek, you can be sure that you'll find a warm welcome awaits you as well as a delicious menu!

See what's on offer at Kilmartin Museum's shop. With goods from many local artists and new and exciting ranges arriving throughout the year, the shop is the place to pick up that perfect gift or treat yourself!

All profits made from Kilmartin Museum Café and Shop goes to support Kilmartin Museum's work.



	<u>Food</u>	<u>Bar</u>
Saturday	5.30pm – 8.45pm	3.00pm – Late
Sunday	1.00pm – 7.00pm	12.00pm – Late
Monday	5.30pm – 8.00pm	5.00pm – Late
Tuesday	CLOSED	CLOSED
Wednesday	CLOSED	6.00pm-late
Thursday	5.30pm – 8.45pm	5.00pm – Late
Friday	5.30pm – 8.45pm	5.00pm – Late

SUNDAY ROAST AT THE SHOWER

Enjoy a traditional Sunday roast from 1.00pm until 7.00pm



Monday Music Night

Starts approximately 9.00pm until late

Local Performers

Wednesday evening

Whisky tasting or Gin Flight from 6.30pm

Booking is Advisable – Telephone 01852 200345

Well behaved children with responsible adults welcome until 10pm

Cuilfail Hotel

Take Away Menu

Available until 8.30pm

Mains

Prices valid as of 30/09/15

Haddock & Chips	£7.00
Lasagne & Chips	£7.00
Beef Burger & Chips	£7.50
With Cheese	£1 extra
With Bacon	£1 extra
Steak & Ale Pie & Chips	£8.00
Battered Smoked Sausage & Chips	£6.50
Chicken Curry, Rice	£7.00
Macaroni Cheese & Chips	£6.00
Scampi & Chips	£7.00
Chicken Goujons & Chips	£7.00

01852200274

Pizza 12"

Cheese & Tomato	£6.00
Toppings:	
Ham, Salami, Tuna, Haggis	£1.50
Mushroom, Peppers, onion & Pineapple	£1.00
12" Garlic Pizza, tomato & Garlic	£5.00

Sides

Garlic Bread	£2.30	Garlic Bread with Cheese	£3.20
Onion Rings	£3.00	Potato Wedges	£3.00
Chips /Cheesy	£2.50/£3.40	Mushy Peas	£1.50
Side Salad	£2.50	Rice	£2.50

Soft Drinks & Alcoholic Drinks
Please ask for availability at the bar

01852 200274

Due to our alcohol licence

Under 18s must be accompanied by an adult



Your in-laws called, and are coming to stay
You tell your wife, Oh Nay ,Oh Nay !!



That noisey school friend wants to
visit in June.
Oh, please NO !! I will be doomed.



Your son, will soon arrive with barns galore,
You and your wife are running out
the door.



But



Do not worry, just call Melfort Pier !
01852-200-333

And all of them , can stay a few days here.

We welcome grand pa in his wheel chair,
and the family dog too....



Let them come fishing , enjoy the suana and
No more worries for YOU !



Melfort Pier & Harbour

Kilmelford by Oban
Argyll, PA34 4XD

www.mellowmelfort.com

Massage

Gabby Rogers
DTM.DRSM

Practising in
Ardfern,
Melfort Club,
Lochgilphead
and Oban.

Phone: 01852 500223

J.D. PLANT

• *Ditching* • *Landscaping* • *Site Work* • *Track Building* • *Repair*



Anything else considered

Mob: 07766 686460

Tel: 01866 844212

James Dalton, Maolachy House, Lochavich
By Taynuilt, Argyll PA35 1HJ

A Property J Services

SPECIALISING IN

Ceramic and Natural Stone Wall and Floor Tiling

Kitchen and Bathroom Installation

Painting and Decorating both internal and external

Patios and Paths Laid

Bespoke Sheds, Garages, Workshops

- made to measure and erected

For a Professional Finish to a High Standard

Call Anthony on 07717 825402

Email: anthonybingham@hotmail.co.uk

A service you can rely on, a name you can trust

Locally based, references available

KILNINFORD NEWS TEAM (Contacts etc.)

Please send any adverts to **Val (e-mail: ceonamara@hotmail.co.uk Tel: 07730 590 813)** - adverts should be in a format which can readily be inserted into a MS Word document without any need for alteration. If in doubt please ask for advice. Short entries for Forthcoming Events and all other contributions should be sent to **Graham (e-mail: warhelle@blueyonder.co.uk)**. For any distribution issues please contact **Gill (e-mail: Gill@thephilpotts.me.uk)**.

It is hoped that issues of the Kilninford News will be produced the first week in April, August and December. Please note that **all contributions** should be with the Kilninford News team by the end of the first full week of the preceding month.

Advertising rates:	Private ads.	£1 each
	Commercial ads.	£5 each per quarter page
		£10 each per half page
		£20 each per whole page

For those who wish to provide adverts, contributions, articles, letters etc. other than by e-mail (in a suitable form for printing) may also snail-mail them to Graham at the contact address below:

The Kilninford News is produced under the Constitution of the Kilninford Association 2015

Kilninford Association 2015

c/o Warhelle Consulting Ltd.
Fao Prof. Graham Wardle
Hawthorns, 79 Garton Drive
Lowton, Cheshire, WA3 2TR
Tel: 01942 51 3322
Fax: 01942 71 6774
e-mail: warhelle@blueyonder.co.uk



£5 off when you spend over £20 on food

Print your voucher off online

www.chartroom2.com/5-voucher/

Lunch 12pm - 2:30pm. Dinner 6pm-9pm

All Day Menu available 10am-10pm

Our famous Music Nights take place as usual

every 1st and 3rd Friday

of the month from 9:30pm

01852 200233

At Loch Melfort Hotel, Arduaine –

Next to NTS Arduaine Garden

www.chartroom2.com

Keep in contact with us via Facebook and Twitter

